


**CATTARAUGUS REGION  
COMMUNITY FOUNDATION**  
2013 annual report

**blueprints**  
for growinggood



IT IS NOT THE BEAUTY OF A  
BUILDING YOU SHOULD LOOK AT;  
IT'S THE CONSTRUCTION OF THE  
FOUNDATION THAT WILL  
STAND THE TEST OF  
TIME. DAVID ALLAN COE

## BUILDING ON SUCCESS... BUILDING FOR THE FUTURE

Sometimes success comes from careful planning and a finely detailed blueprint. Sometimes it comes from a combination of hard work, determination and luck – and then seizing upon those fortuitous opportunities. In 1994 when the Cattaraugus Region Community Foundation was started, few imagined where it would be 20 years later. We are thrilled to share not only 2013's annual report, but milestones from the past 20 years.

There was not really a blueprint for starting a community foundation in Cattaraugus County. In fact the position paper outlining the need for the foundation was both skeptical and hopeful, stating "While the establishment of a fully (foundation) vibrant program will be very difficult to achieve, there does not appear to be any reason why such an effort should not be undertaken." Thank goodness for dreamers and achievers!

The 80+ funds that exist today and support hundreds of causes and nonprofits would not be possible if it was not for the first fund that brought the Foundation into existence – the Allegheny River Valley Trail Fund. We salute those community leaders who had the vision, but also the willingness to take a chance... a lucky shot at creating an institution for the future for the betterment of this region.

The Foundation has grown from about \$40,000 in assets to more than \$13 million, from one fund to more than 80 different funds with annual grants averaging \$433,000 to causes ranging from health and wellness to scholarships and community development to human services.

Building on the dreams and hopes of the charter members, today's 18-member board of directors has developed a new strategic plan to move the foundation to its 25<sup>th</sup> anniversary in 2019. There are goals and benchmarks and data to be considered – it's become a more sophisticated and challenging operation. However, the mission is the same – our goal is to assist community members in their philanthropic endeavors to help others thus enriching the quality of life in our community.

In that spirit we invite you, too, to build for the future – by starting or adding to an endowed fund for the cause or charities you care about most.

*Carol Stitt*  
President

*Karen Niemi Buchheit*  
Executive Director



## constructing a new community center

Meditation has long been touted by practitioners as a means to reduce stress and promote both physical and emotional health and well-being – somewhat akin to an exercise program for the mind.

With the hopes of bringing that exercise to more people in the community, members of a local meditation group, Southern Tier Sangha and Friends, established the Olean Meditation Center Fund at the Foundation in 2011 with the goal of raising funds to renovate or build and maintain a home for the members to gather for regular meditation sessions and hold seminars to teach the community about different styles of meditation.

In its supporting role, the Foundation accepted donations to the fund, provided accounting services, sent acknowledgments to donors and kept the OMC members up-to-speed on their fund's status, as well as promoted the fund in the community.

In 2013 the members found their new home, opening the Olean Meditation Center on the Windfall Road in Olean. Since then they've held numerous spiritual retreats, established a regular meditation schedule open to the community, partnered with the Hindu Society of Olean and Allegany, opened the center for yoga classes and are continuing to grow in their new home. By building a fund with the Community Foundation the group realized their goal of creating a space for their programs and a welcome place for all to gather.

Members pictured: Susan Wyss, Dr. Yogini Kothari and Dr. Richard P. Reilly



## supporting future leaders

One of the first places philanthropic alumni tend to turn to help support students graduating from their alma maters is to the schools themselves. However, schools don't always have the structure to manage and grow scholarship funds. Community foundations do, though, and can help schools and their donors build long-lasting scholarship funds to support future leaders.

One such partnership was recently built between the Olean City School District and the Cattaraugus Region Community Foundation.

By creating a scholarship fund which houses several awards as part of the Foundation's overall investment portfolio, the school district has been able to see an increase in the funds' investment performance and also take advantage of the Foundation's many services. The Community Foundation provides a full range of services for its scholarship program, including online applications, promotion of the awards, processing scholarship payments, reporting to donors and investment management so the school can continue doing what it does best – developing students to become the architects of the future.



## building a legacy

Preserving local history is a never-ending task for the Allegany Area Historical Association, so making sure the organization secured its future to continue its legacy was crucial to its members. Their search for a solid foundation on which to build the organization's future led them to create an agency endowed fund at the Cattaraugus Region Community Foundation.

Housed in the former Methodist Episcopal Church at 25 North Second Street in Allegany, one of the group's aims for its fund is to provide support to maintain the historic structure built in 1855.

Because it established an agency fund with the Community Foundation, the Allegany Area Historical Association has been able to promote giving to the fund, by mail and online, and can rely on the Community Foundation's record of investing wisely, helping funds grow to provide backing for operations and special projects.

Members pictured: Carol Livingston, Alice Altenburg, Margaret Parker and Francie Potter.



## BUILD YOUR OWN FUND

### What are the advantages of having a fund at the Community Foundation?

**Ease** There is no need for incorporation, applying for 501(c)(3) status, etc. You can set up a fund with two standard forms.

**Immediate tax advantage for donors** Each donation to a Community Foundation fund is tax-deductible to the maximum allowed for the donor.

**Lower administrative costs** The Foundation handles annual audit and 990 tax return for all funds; overall costs are shared among all funds as part of CRCF operations.

**Investment management** All funds benefit from efficiencies of scale from and diversity of the CRCF portfolio; no additional time and expenses are required to establish an investment account and policies.

**Gift receipts** The Foundation acknowledges all gifts in writing and provides necessary receipts for tax deductions.

### How do I start a fund?

Contact the Foundation staff by phone 716-372-4433 or email [foundation@cattfoundation.org](mailto:foundation@cattfoundation.org). Let us know if you want to help one or more specific nonprofit organizations, create a scholarship or have an impact on a specific field of interest. We will walk you through the simple steps, explain ways you can donate and help complete forms to establish your fund and provide you a foundation for your philanthropy. We have a fund blueprint that will fit your needs!

### Can I give to an existing fund?

Giving to a fund at the Foundation is easy – checks made payable to CRCF may be mailed to the office or delivered in person. Gifts by credit card may be made either by phone or online at [cattfoundation.org](http://cattfoundation.org). Gifts of stock and planned gifts are also accepted – contact Foundation staff for more information.

## NEW FUNDS

*The following funds were established at CRCF between January 1, 2013, and December 31, 2013.*

Allegany Area Historical Association Fund  
The Rev. Leo J. Gallina Endowment Fund for St. Bernard of Clairvaux Church  
Kay Pfeiffer Gerkin Endowment Fund  
Alyn J. Heim Music Scholarship Fund  
Daniel "Tiger" Krick Junior Golf Program Fund  
Mental Health Association in Cattaraugus County Fund  
Olean City School District Scholarship Fund, including:  
• Jack and Muriel Fogarty Memorial Scholarship  
• Russell F. Greenawalt and Elizabeth Page Greenawalt Scholarship

• Mary Elizabeth Smith Scholarship  
• Thomas and Robert Smythe Scholarship  
Jim and Gail Olson Mercy Flight Fund  
Michele Krahe Peace OHS Scholarship  
Southern Tier Military Support Group Scholarship  
Beth Todd Memorial Fund  
United Way of Cattaraugus County Inc. Fund  
Paul and Mary Lou Wood Foundation Fund  
For a full description of these new funds, or any of the foundation's other funds, visit [cattfoundation.org](http://cattfoundation.org).

**"PHILANTHROPY  
BREATHES LIFE  
INTO YOUR  
COMMUNITY."**

**JIM STITT SR., SPEAKING WITH HIS  
SON, JIM STITT JR., ON CAPACITY  
BUILDING AT THE FOUNDATION'S  
NONPROFIT NETWORKING DAY 2013**



**COMMUNITY FOUNDATION FUNDS**

**Agency Funds**

Allegheny Area Historical Association Fund  
Challenger Learning Center Fund  
Council on Addiction Recovery Services Inc. Fund  
Family Partners Group Fund  
Mental Health Association in Cattaraugus County Fund  
Kay Pfeiffer Gerkin Endowment Fund  
United Way of Cattaraugus County Inc. Fund

**Donor Advised Funds**

Mahar Family Foundation Fund  
Manual Trust Fund  
Olean City School District Foundation Fund  
Rose Pappas Foundation Fund  
Stitt Family Fund  
T-A-D-J-M Foundation Fund  
Kaleigh Wilday Endowment Fund

**Donor Designated Funds**

Carroll Anstaett Olean Little League Fund  
Samuel Costa Endowment Fund  
The Rev. Leo J. Gallina Endowment Fund for St. Bernard of Clairvaux Church  
Gator Fund  
Gift Tree Fund  
Kothari Family Endowment Fund  
Mildred Milliman Fund  
Olean Food Pantry Fund  
Olean Meditation Center Fund  
Jim and Gail Olson Mercy Flight Fund  
Luella Potter Endowment Fund  
Doris Reisner Endowment Fund  
Lewis & Doris Reisner Endowment Fund  
St. John's Church Endowment Fund  
St. Mary of the Angels Future Fund  
Salamanca Area Senior Center Fund  
Kay & Oliver Williams/Rushford Endowment Fund  
Paul and Mary Lou Wood Foundation Fund

**Field of Interest Funds**

Allegheny Community Beautification Fund  
Allegheny Nordic Fund  
Allegheny River Valley Trail Fund  
Audible Signals for Olean Fund  
Beautification Fund for Olean Community  
Cattaraugus County Law Enforcement Fund:  
– Santa Sheriff Fund  
–Special Response Team Fund  
Continental 1 Corridor Fund  
Cuba Lake Area Young Sailors' Fund  
Dictionary Fund  
Ellicottville Great Valley Trail Fund  
Paula Flint Fund for the Performing Arts  
Higgins Memorial Golf Tournament Fund  
Horse Resource Fund  
Jamie's Fund  
F. Donald Kenney Fund  
Kids and Cancer Benefit Fund  
Daniel "Tiger" Krick Junior Golf Program Fund  
Meals on Wheels of Cattaraugus County/Friends of Aging Fund  
Mountain Sports Fund  
John Muir Book Fund  
Olean Professional Firefighters Fireworks Fund  
Santa Claus Lane Fund  
Southern Tier Military Support Group Fund  
STAB It Foundation Fund  
Beth Todd Memorial Fund  
Visual Arts Alliance Endowment Fund  
Wing Ski Club Endowment Fund  
Woodland in the City Endowment Fund  
Louis Zamperini Tribute Fund

**Scholarship Funds**

Tyler Bihler Memorial Scholarship  
Burt Scholarship  
May C. Carroll Scholarship  
Hinsdale Alumni Association Memorial Scholarship  
Mohammed & Sakeena Iqbal Health Care Award  
Signe, Svenborg, Agnes and Selma Johnson Scholarship  
Signe H. Johnson Scholarship  
Wayne Krieger Memorial Scholarship  
Kothari Family Fund Health Care Scholarship  
Pat McGee Nursing Scholarship  
John J. Murphy Family Scholarship  
Daniel McCarthy Scholarship  
Olean City School District Scholarship Fund:  
–Jack & Muriel Fogarty Memorial Scholarship

–Russel F. Greenawalt & Elizabeth Page Greenawalt Scholarship  
– Mary-Elizabeth Smith Scholarship  
– Thomas & Robert Smythe Scholarship  
Otto/Otto-Eldred Alumni Scholarship  
Michele Krahe Peace Olean High School Scholarship  
Mark J. Prockton Memorial Scholarship  
Norman J. "Pete" Schussele Scholarship  
Ben & Rose Schwabenbauer Educational Scholarship  
Southern Tier Military Support Group Scholarship  
Jonathan Teuscher Scholarship  
JoAnn Wehmeyer English Scholarship

**Unrestricted Funds**

Anonymous II Fund  
Community Fund

**DONATE ONLINE AT CATTFOUNDATION.ORG**

**LEGACY SOCIETY**



The Cattaraugus Region Community Foundation established the Legacy Society to recognize donors who have made a gift or plan to make a gift through an estate plan or through some other planned gift instrument such as a life income gift, life insurance policy or retirement plan.

**Members**

Anonymous\*  
Catherine M. Cridler\*  
Estate of Dr. Rudy Burt\*  
Anonymous  
Doris Reisner\*  
Estate of F. Donald Kenney\*

*\*Deceased*



SEE THE 2013 DONOR AND MEMORIAL TRIBUTES LISTINGS ONLINE AT **CATTFOUNDATION.ORG**

To view a full timeline visit [catffoundation.org](http://catffoundation.org)



September 20, 1994 – Founded as a nonprofit and first named the Greater Olean Community Foundation with the purpose of enriching life in the Olean area by providing a vehicle and service for donors to pursue varied philanthropic interest and to serve as a resource for charitable activities.



First fund – Allegheny River Valley Trail Fund – established under the leadership of Joseph Higgins  
 1996 – Carol Stitt named first Executive Director  
 Foundation ends year with \$43,835 in assets



Kay & Oliver Williams/Rushford Fund – first 6-figure endowment – and Hinsdale Alumni Association Memorial Scholarship established

DBA changed to Cattaraugus Region Community Foundation to reflect broader geographic range of services  
 Assets reach \$765,000



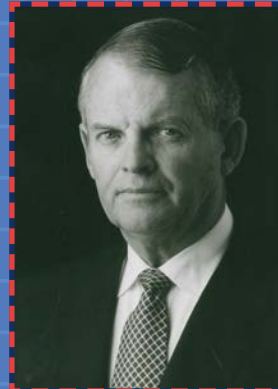
Kaleigh E. Wilday Endowment Fund established in memory of 8-year-old Kaleigh  
 2002 – Rose Pappas Foundation and Olean City School District Foundation funds created



CRCF marks 10-year anniversary with assets of \$7 million and more than 30 funds; grants top \$350,000 including more than \$7,000 in scholarships



Woodland in the City Fund established  
 Carol Stitt retires as Executive Director, becomes board President; Bob Busan named Executive Director; Ryan Michelle Wilcox hired as assistant director



John J. Murphy Family Scholarship established



Carroll Anstaett Olean Little League Fund created  
 Karen Niemic Buchheit hired as first full-time Executive Director as Bob Busan retires.

Assets reach \$11.5 million among more than 60 funds

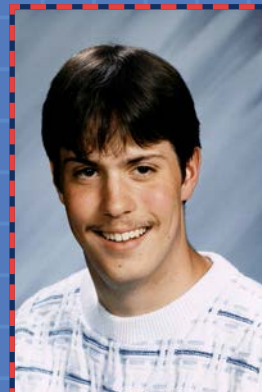
Assets reach \$13.6 million among more than 80 funds, including 20 scholarships; grants since inception top \$4 million

1994 1995 1996 1997 1998 1999 2000 2001 2002 2003 2004 2005 2006 2007 2008 2009 2010 2011 2012 2013 2014

September 20, 1995 – Receives 501(c)(3) status



Jonathan Teuscher Scholarship established



Burt Scholarship established through Dr. Rudy Burt bequest to First Presbyterian Church of Olean



July 2001 – Mildred Milliman Fund anonymously established with \$5 million gift

F. Donald Kenney Fund to support the Southern Tier Biennial art exhibit under the leadership of the Cattaraugus County Arts Council and Olean Public Library is established.



Tyler Bihler Memorial Scholarship created in memory of 9-year-old Tyler



Grants total \$499,000 including \$19,825 in scholarships

Marking 15 years, CRCF has more than 50 funds and \$8.9 million in assets



CRCF hosts first annual Nonprofit Networking Day

Agency endowed funds include: Council on Addiction Recovery Services (CAREs), Challenger Learning Center, Family Partners Group, and Mental Health Association in Cattaraugus County.





From left: Jim and Carol Stitt, who committed \$100,000 to be provided through the Stitt Family Fund to St. Bonaventure University for a scholarship for students transferring from Jamestown Community College; with John Sayegh, Vice President and Dean of JCC's Cattaraugus County campus; Sr. Margaret Carney, SBU President; and Karen Niemic Buchheit, CRCF Executive Director.



Olean Public Library Foundation Director Lance Chaffee (center) demonstrates how to use the Foundation Directory Online database, access to which was made possible through a grant from the Community Fund, to Karen Niemic Buchheit, CRCF Executive Director, and Nick Goodell, Family Partners Group executive director.



Megan Taylor, Interfaith Caregivers executive director, and Carroll and Dolores Anstaett add Greater Olean Area Chamber of Commerce gift certificates, purchased through a grant from the Gift Tree Fund the Anstaetts established, to Gift Tree recipients' packages.

## GRANTS

### Allegany Community Beautification Fund

Holiday decorations for the Village of Allegany \$1,015.00

### Allegany Nordic Fund

Supplies and equipment to maintain trails \$901.91

### Carroll Anstaett Olean Little League Fund

Olean Little League \$5,623.00

### Beautification Fund for Olean Community

Mount View Cemetery iron fence replacement \$2,500.00

### Community Fund

Olean-Bradford Area YMCA "Fitness on Request" interactive system \$2,000.00

SPCA in Cattaraugus County spay/neuter clinic \$2,000.00

Dream It. Do It. Western New York STEM Fair \$1,500.00

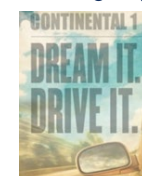
Olean Public Library Foundation Directory Online database \$462.33

Keynote Chorus \$300.00

Healthy Livable Communities Consortium meeting supplies \$203.00

### Continental 1 Corridor Fund

Funding for Continental 1 operations \$121,000.00



### Samuel Costa Endowment Fund

St. Elizabeth of Hungary Church \$1,473.52

St. Raphael's Roman Catholic Church \$736.75

Hamlin Memorial Library \$736.75

### Cuba Lake Area Young Sailors' Fund

Cuba Lake Yacht Club for six sailboats for young sailors and construction of wharf \$13,000.00



### Dictionary Fund

Dictionaries for area third graders \$672.00

### Ellicottville Great Valley Recreational Trail Fund

Fees and expenses for trail project planning \$12,696.45

### Family Partners Group Fund

Store start-up supplies \$1,494.18

Marketing for local artists at Hometown Talents \$1,000.00

Supplies for "An Evening with Local Designers" marketing event \$200.77



### Paula Flint Fund for the Performing Arts

The Olean Theater Workshop \$150.00

### Gift Tree Fund

GOACC gift certificates for Gift Tree families \$1,140.00

Interfaith Caregivers Inc. \$300.00

### Higgins Memorial Golf Tournament Fund

Olean General Hospital Foundation \$1,000.00

Daniel "Tiger" Krick Junior Golf Program Fund \$1,000.00

St. Bonaventure University Golf & Men's Swim teams \$500.00

HomeCare & Hospice \$250.00

The ReHabilitation Foundation \$250.00

### F. Donald Kenney Fund

Cattaraugus County Arts Council Southern Tier Biennial exhibition \$18,400.00

### Kids and Cancer Fund

Assistance to patients and families with children in need of medical care \$1,509.00

### Kothari Family Endowment Fund

Olean General Hospital Foundation \$1,000.00



Genesis House \$250.00

Jamestown Community College \$250.00

Olean Food Pantry \$250.00

### Mahar Family Foundation Fund

Pfeiffer Nature Center \$500.00

Interfaith Caregivers Inc. \$300.00

Portville Food Pantry \$200.00

Salvation Army \$200.00

Olean Girls Softball \$200.00

Genesis House \$150.00

Olean First Baptist Church \$150.00

Genesis House \$150.00

Kathi Ward Foundation for Nursing Practice, Inc. \$150.00

### Manual Trust Fund

Keowee Chamber Music DBA Pan Harmonia \$1,500.00

### Mildred Milliman Fund

Olean General Hospital Foundation \$151,998.00

SPCA in Cattaraugus County \$3,654.00

Beautification Fund for Olean Community \$2,863.00

Roswell Park Cancer Institute \$1,770.00






(Mildred Milliman Fund grants continued)

St. Jude Hospital	\$1,770.00
Camp Good Days & Special Times	\$1,770.00
SPCA serving Allegany County	\$1,262.00
Humane Society of U.S.	\$1,130.00
National Wildlife Federation	\$1,130.00
American SPCA	\$1,130.00
International Fund for Animal Welfare	\$1,130.00
World Wildlife Fund	\$1,130.00
National Anti-Vivisection Society	\$1,130.00
Best Friends Animal Society	\$1,130.00
Guiding Eyes for the Blind	\$885.00
Blinded Veterans Association	\$885.00
American Red Cross	\$753.00
American Cancer Society	\$753.00
American Heart Association	\$753.00
March of Dimes, WNY Division	\$753.00
Muscular Dystrophy Association	\$753.00
American Kidney Fund	\$753.00
National MS Society	\$753.00
American Lung Association in New York	\$753.00
Salvation Army	\$753.00
Paralyzed Veterans of America	\$753.00
Easter Seals	\$697.00
American Foundation for the Blind	\$697.00
National Epilepsy Foundation	\$697.00
Cystic Fibrosis Foundation	\$697.00
Alzheimers Association	\$697.00
Leukemia & Lymphoma Society	\$697.00
Town of Olean Fire Department	\$624.00
United Spinal Association	\$624.00
HOPE Foundation	\$623.00

**Mountain Sports Fund**

Educational film project ski video	\$500.00
U. S. Ski and Snowboard Association member dues scholarship	\$285.00

**Olean City School District Foundation Fund**

 Gus Macker Basketball tournament expenses	\$31,036.50
Red & Gold Scramble tournament expenses	\$7,565.72
Annual Summer STAR Program	\$3,896.20
Mike Seege anti-bullying magic show	\$1,350.00
Hill Brothers "The Bullying Show" performances	\$1,290.00
Headsets in computer labs at Olean High School	\$1,752.00
JLiNe Dance Crew anti-bullying performance	\$1,390.00
Kirk Gilbert anti-bullying concerts	\$400.00

**Olean Meditation Center Fund**

Purchase of property and furnishings for new meditation center	\$104,456.00
--	--------------

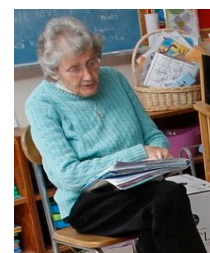


**Jim & Gail Olson Mercy Flight Fund**

Mercy Flight Inc. WNY	\$100.00
-----------------------	----------

**Rose Pappas Foundation Fund**

Meals on Wheels matching challenge	\$1,000.00
Hinsdale United Methodist Church	\$710.00
HomeCare & Hospice	\$400.00
Olean General Hospital Foundation	\$400.00
Hinsdale Food Pantry	\$300.00
Olean Food Pantry	\$300.00
Olean Senior Center	\$300.00
St. Stephen's Episcopal Church	\$250.00
Interfaith Caregivers Inc.	\$200.00
Mental Health Association	\$200.00
Portville Food Pantry	\$200.00
Rebuilding Together Olean Area Inc.	\$200.00
The ReHAbilitation Foundation	\$200.00
St. Mary of the Angels Church	\$200.00
Olean First Baptist Church	\$100.00



**Luella Potter Endowment Fund**

Southern Tier Catholic School System	\$1,621.00
--------------------------------------	------------

**Doris Reisner Endowment Fund**



St. Stephen's Episcopal Church	\$915.75
ReHAbilitation Center	\$915.75
American Cancer Society	\$915.75
Genesis House	\$610.50
Empire State Association for the Deaf	\$610.50
HomeCare & Hospice	\$610.50
Interfaith Caregivers Inc.	\$610.50
American Diabetes Association	\$305.25
American Friends Service Committee	\$305.25
SPCA in Cattaraugus County	\$305.25

**Lewis & Doris Reisner Endowment Fund**

Olean General Hospital	\$7,463.00
------------------------	------------

**Salamanca Area Senior Center Fund**

Installation of air conditioning at senior center	\$9,200.00
Project to increase building energy efficiency and renovations	\$5,057.04
Repair to freezer at senior center	\$875.00

**Santa Sheriff Fund**

GOACC gift certificates for Santa Sheriff	\$7,000.00
Baskets to raffle	\$1,015.00

**Southern Tier Military Support Group Fund**



Monthly mailings and care packages to overseas troops	\$12,294.82
Allegany Sons of AMVETS deployed Ft. Drum soldier care packages	\$500.00
Bath VA Medical Center Golden Age Games	\$250.00
Wounded Warrior Project A-100 Challenge	\$250.00
LEEK Hunting and Mountain Preserve	\$250.00

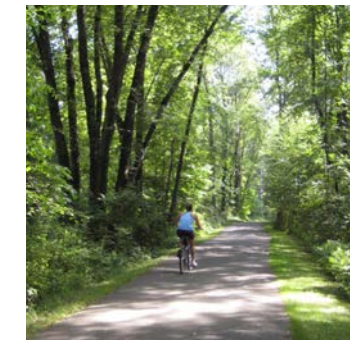


Virgil Howard (center), a Meals on Wheels recipient, with (from left) Betty Pappas of the Rose Pappas Foundation, which issued a matching donation challenge to the Meals on Wheels/Friends of Aging Fund; Karen Niemic Buchheit, CRCF Executive Director; Lisa Swaciak, Cattaraugus County Department of Aging Home Delivered Meal coordinator; and Cathy Mackay, director of the Department of Aging.

Clarkson Army ROTC Cadet Association "Drop and Give Me Twenty Bucks" program	\$250.00
Yellow metallic ribbon for Military Christmas Tree	\$82.45

**Special Response Team Fund**

Special Response Team equipment	\$3,755.37
Paramedic supplies and equipment	\$962.42



CRCF HAS BEEN ACTING AS A RESOURCE IN THE COMMUNITY BRINGING PHILANTHROPY TO LOCAL DONORS SINCE IT WAS ESTABLISHED IN 1994 WITH ITS FIRST FUND, THE ALLEGHENY RIVER VALLEY TRAIL FUND. SEE MORE PHOTOS FROM CONSTRUCTION OF THE ALLEGHENY RIVER VALLEY TRAIL AT [FACEBOOK.COM/CATTFUNDATION](https://www.facebook.com/cattfoundation)

**WHATEVER  
GOOD THINGS  
WE BUILD END  
UP BUILDING  
US. JIM ROHN**

**Stitt Family Fund**

St. Bonaventure University for Stitt Family Scholarship \$10,000.00

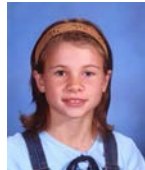
**Visual Arts Alliance Endowment Fund**

Family Partners Group "Meet the Designer" events \$2,110.00

**Kay & Oliver Williams/Rushford Endowment Fund**

First Baptist Church \$936.00  
 United Methodist Church \$936.00  
 Rushford Free Library \$936.00  
 Podonque Cemetery \$632.80  
 Rushford Boy Scouts Pack 744 \$632.80  
 Rushford Cemetery Association \$632.80  
 Conservation Camp – scholarship \$632.80  
 Rushford Concert Band \$632.80

**Kaleigh Wilday Endowment Fund**



Cuba-Rushford Central School field trip \$2,000.00  
 Jamestown Community College annual scholarship program \$1,000.00  
 Olean-Bradford Area YMCA \$1,000.00

Cuba Library \$1,000.00  
 Cuba Rushford PTA \$1,000.00  
 Dresser-Rand Challenger Learning Center for student field trips \$1,000.00  
 Pfeiffer Nature Center \$1,000.00

**Wing Ski Club Endowment Fund**

U.S. Ski & Snowboard Association dues \$380.00

**Woodland in the City Fund**

Seneca Heights squirrel repair \$30.63

**2013 GRANTS BY PROGRAM**

Total grants: \$667,996



Community Development 39%



Health/Wellness 27%



Scholarships 14%



Human Services 6%



Arts/Culture 4%



Youth Development 4%



Educational 3%



Animal Welfare 2%



Religion 1%

**shaping a community**

The Foundation board honored Erick and Marianne Laine and Peter Laine (not pictured) as 2013 Friends of the Foundation for their generosity, service and dedication to philanthropy in the Greater Olean community.

Board member Ward "Skip" Wilday presented the awards on behalf of the Foundation.

"What they have done demonstrates what a difference one family can make in a community," Mr. Wilday said of Erick, Marianne and Peter's volunteerism and support of nonprofits.

"Erick, Marianne and Peter join a distinguished group of community philanthropists who have made our region a better place by their active involvement and generosity," said Karen Niemic Buchheit, CRCF Executive Director.



**THE ROAD TO SUCCESS IS ALWAYS UNDER CONSTRUCTION.**

LILY TOMLIN



2013 Foundation scholarship students recognized at the annual Friends of the Foundation Luncheon included: (front row, from left) Francesca Bartimole, Katie Smith, Courtney Lentz, Jamie Mason, Jade Nolan, Michelle Halliday, Marielle Giardini, Allison Lindquist, Madison Stavish and Kate McKeown; and (back row, from left) Andrew Scanlan, Curt Monkhouse, Kyle Stover, board president Carol Stitt, scholarship committee co-chairs Dr. Tony Evans and Dr. Yogini Kothari, John Rhoades, Taylor Buffington and Matthew Sader.

## SCHOLARSHIPS

### Burt Scholarship

Established by the First Presbyterian Church of Olean Burt Committee in memory of Dr. Rudy Burt, this award is given based on a student's financial need.

Matthew Davis	\$1,000.00
Albanie Hendrickson-Stives	\$1,000.00
Allison Lindquist	\$1,000.00
Matthew Sader	\$1,000.00



### Hinsdale Alumni Association Memorial Scholarship

Established by the Hinsdale Alumni Association, this scholarship is awarded to a graduating senior at Hinsdale Central School who has an average of 80 percent or higher, demonstrates qualities of good citizenship and good character, and has definite educational goals.

Melinda Drabant	\$1,000.00
-----------------	------------



### Mohammad & Sakeena Iqbal Health Care Award

Established by Drs. Ahmad and Naheed Hilal in memory of Dr. Naheed Hilal's parents, this scholarship is for a senior

from Allegany-Limestone High School, ranked in the top 25 percent of the class, entering a discipline related to the medical field.

Kaylee McRae	\$500.00
--------------	----------

### Kothari Family Health Care Award

Established by Drs. Ashok and Yogini Kothari, this scholarship is awarded to an Allegany-Limestone senior based on major, financial need and SAT scores.

Marielle Giardini	\$500.00
-------------------	----------

### Daniel McCarthy Scholarship

Given through the Catherine M. Cridler Trust, this scholarship is awarded to a student from New York or Pennsylvania who plans to pursue a degree in business.

Skyler Marshal	\$1,500.00
----------------	------------



### Pat McGee Nursing Scholarship

Established through the Pat McGee Endowment, this fund is named in memory of the former New York State Senator representing the 57<sup>th</sup> State Senate District for students who are pursuing nursing degrees.

Michelle Halliday	\$1,000.00
Brandi Sprout	\$1,000.00

### John J. Murphy Family Scholarship



Established through a grant from the Communities Foundation of Texas, this scholarship is named in honor of John J. Murphy, Olean native and former president of Dresser Industries, Inc. This is a \$10,000 scholarship, with \$2,500 awarded per year for up to four years.

#### 2013 recipients:

Francesca Bartimole	\$2,500.00
Kyle Brown	\$2,500.00
Curt Monkhouse	\$2,500.00
Jade Nolan	\$2,500.00
James A. "Andrew" Scanlan	\$2,500.00
Kyle Stover	\$2,500.00

#### Continuing students:

Johnathan Andhor	\$2,500.00
Shawn Campbell	\$2,500.00
Piper Chester	\$2,500.00
Alexa Donner	\$2,500.00
Lindsay Forness	\$2,500.00
Allex Granger	\$2,500.00
Brian Grosso	\$2,500.00
Jacquelyn Halladay	\$2,500.00
James Hardenbergh	\$2,500.00
Taylor Kent	\$2,500.00
Brent Liberati	\$2,500.00
Chad Monkhouse	\$2,500.00
Amy Ruth	\$2,500.00
Kimberly Sklener	\$2,500.00
Amanda Smith	\$2,500.00
Kimberly Telaak	\$2,500.00
Kyle Trietley	\$2,500.00
Alexander Wright	\$2,500.00



### Otto/Otto-Eldred Alumni Scholarship

Established by the Otto/Otto-Eldred Alumni Association, this scholarship is given to a senior graduating from Otto-Eldred High School who has a GPA of at least 2.75 and has been accepted to an accredited 2-year or 4-year school.

Samantha Renninger	\$1,000.00
--------------------	------------



### Michele Krahe Peace OHS Scholarship

Established in Michele's memory by her parents, David and Irene Krahe, this scholarship is for an Olean High senior with preference for a student pursuing an accounting or business degree.

Madison Stavish	\$500.00
-----------------	----------

### Mark J. Prockton Memorial Scholarship

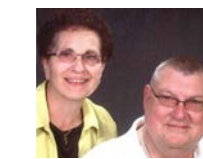
This scholarship is for a Hamburg High senior who has lettered in track and has the highest GPA on the team. It was established in memory of Mark J. Prockton by his brothers.

Zachary Stumpf	\$500.00
----------------	----------

### Norman J. "Pete" Schussele Scholarship

Established in memory of "Pete" Schussele by his family, this award goes to an Olean High senior of good character who has grade averages above 85 percent and demonstrates financial need.

Kaitlyn McKeown	\$500.00
-----------------	----------



### Ben & Rose Schwabenbauer Educational Scholarship

Established by Ben and Rose Schwabenbauer, former long-time teachers in the Olean City School District, this award is given to an Olean High School or Otto-Eldred High School senior pursuing an elementary education related degree.

Katie Smith	\$500.00
-------------	----------



### Jonathan Teuscher Scholarship

Established by Steven and Donna Teuscher in memory of their son, Jonathan, this scholarship is awarded to a graduate who has faced challenges while maintaining a positive attitude. Each student receives a \$2,500

scholarship, \$625 per year over four years.

#### 2013 recipients:

Taylor Buffington	\$625.00
Thao Huynh	\$625.00
Katherine Fox	\$625.00
Jamie Mason	\$625.00
John Rhoades	\$625.00

#### Continuing students:

Marcus Aiello	\$625.00
Chelsea Kuhs	\$625.00
Jericca Linderman	\$625.00
Martha Ruether	\$625.00
Samantha Webster	\$312.50



### JoAnn Wehmeyer English Scholarship

Established by former students in memory of Mrs. Wehmeyer, who taught English at Olean High School for 42 years, this scholarship is awarded to an Olean High School senior who excels in writing.

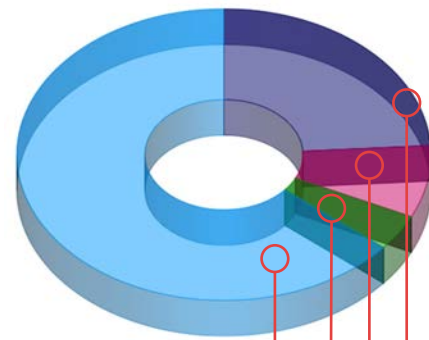
Thomas Kirk	\$1,000.00
-------------	------------

## BLUEPRINTS FOR SUCCESS



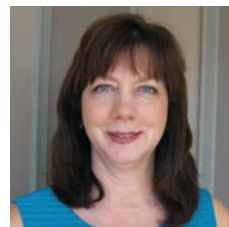
FOUNDATION SCHOLARSHIPS ARE MAKING A REAL DIFFERENCE FOR STUDENTS IN THE CATTARAUGUS REGION. READ ABOUT SOME OF THE FOUNDATION'S SUCCESSFUL SCHOLAR STUDENTS AT [CATTFOUNDATION.ORG](http://CATTFOUNDATION.ORG)

## Asset Allocation



Stocks 64%  
Real Estate 4%  
Cash 8%  
Bonds 24%

## STAFF



**KAREN NIEMIC BUCHHEIT**  
Executive Director



**RYAN MICHELLE WILCOX**  
Director of Communications and Donor Services



**MICHELLE JOYCE**  
Staff Accountant

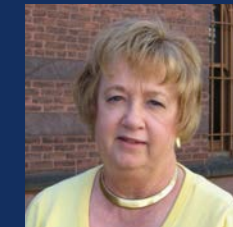
## STATEMENTS OF FINANCIAL POSITION

Years ended December 31,	2013	2012
<b>Assets</b>		
<b>Current:</b>		
Cash and cash equivalents	\$ 1,144,883	\$ 1,227,497
Pledges receivable	50,500	200,000
Other receivables	---	300
Prepaid expense	8,355	7,185
<b>Total current assets</b>	<b>1,203,738</b>	<b>1,434,982</b>
<b>Investments</b>	<b>11,460,477</b>	<b>8,966,394</b>
	<b>12,664,215</b>	<b>\$10,401,376</b>
<b>Liabilities and Net Assets</b>		
<b>Current Liabilities</b>		
Accounts payable	\$ 8,114	\$ 8,251
Grants payable	13,735	---
Funds held for Agencies	260,722	34,325
<b>Total liabilities</b>	<b>282,571</b>	<b>42,576</b>
<b>Unrestricted net assets</b>		
Endowment	11,214,452	9,364,203
Non-Endowed	762,344	899,425
Operations/administration	404,848	95,172
<b>Total net assets</b>	<b>12,381,644</b>	<b>10,358,800</b>
	<b>\$ 12,664,215</b>	<b>\$ 10,401,376</b>

## STATEMENTS OF ACTIVITIES

<b>Support and Revenue</b>		
Gifts and donations	\$ 1,484,560	\$ 790,772
Unrealized gains (losses)	866,291	812,582
Gains (losses) on sale of securities	52,867	24,822
Administrative fees	935	350
Interest and dividends	482,708	268,582
<b>Total support and revenue</b>	<b>2,887,361</b>	<b>1,897,108</b>
<b>Expenses</b>		
Program services	47,965	51,473
Management and general	148,556	137,092
Grants to others	667,996	405,307
<b>Total expenses</b>	<b>864,517</b>	<b>593,872</b>
<b>Change in net assets</b>	<b>2,022,844</b>	<b>1,303,236</b>
<b>Net assets, at beginning of year</b>	<b>10,358,800</b>	<b>9,055,564</b>
<b>Net assets, at end of year</b>	<b>\$ 12,381,644</b>	<b>\$ 10,358,800</b>

## BOARD OF DIRECTORS



**CAROL STITT**  
President,  
CRCF, retired



**WENDY BRAND**  
Vice President,  
New York State  
Assemblyman  
Joe Giglio



**DOUG PRICE**  
Secretary,  
Hunter Agency



**MICHAEL KASPERSKI**  
Treasurer,  
St. Bonaventure  
University



**VICKI BLESSING**  
Park Centre  
Development



**TED BRANCH**  
Iroquois Group



**R. DENNIS CASEY**  
Casey, Halwig  
& Hartle Funeral  
Home



**BARBARA CHEW**  
Mental Health  
Association in  
Cattaraugus  
County, retired



**DR. ANTHONY EVANS**  
Cattaraugus  
County Youth  
Bureau



**KAREN FOHL**  
Olean General  
Hospital  
Foundation



**ERIC GARVIN**  
Community  
Bank, N.A.



**DR. NAHEED HILAL**  
Obstetrician and  
Gynecologist,  
retired



**DR. YOGINI KOTHARI**  
Orthodontist



**DENNIS PEZZIMENTI**  
DBP Realty



**ROBERT SIMON**  
Backhaus &  
Simon



**LARRY SOROKES**  
Greater Olean  
Area Chamber of  
Commerce, and  
St. Bonaventure  
University



**AUDRA STEVENS**  
Olean Area  
Federal Credit  
Union



**WARD "SKIP" WILDAY**  
Morgan  
Stanley Wealth  
Management

## COMMITTEES

(includes board and non-board members)

**EXECUTIVE** Wendy Brand, Mike Kasperski, Doug Price, Carol Stitt and Skip Wilday

**ALLOCATIONS** Wendy Brand, Barbara Chew, Tony Evans, Karen Fohl, Yogini Kothari and Audra Stevens

**BOARD DEVELOPMENT** Vicki Blessing, Wendy Brand, Audra Stevens, Skip Wilday and Jim Stitt Jr.

**FINANCE** Wendy Brand, Mike Kasperski, Doug Price, Larry Sorokes, Audra Stevens and Carol Stitt

**INVESTMENT** Naheed Hilal, Mike Kasperski, Theresa Raftis, Carol Stitt and Steve Foster

**MARKETING** Vicki Blessing, Ted Branch, Karen Fohl, Doug Price, Jeff Reisner, Audra Stevens, Vic Vena and Skip Wilday

**SCHOLARSHIP** Dennis Casey, Barbara Chew, Tony Evans, Naheed Hilal, Yogini Kothari, Bob Simon, Larry Sorokes, Cherie Anile, Dave and Irene Krahe, Sharon Hill-McLarney, Joe McLarney, Carol O'Connell, Betty Pappas, Ben Schwabenbauer, Marcella Smith and Steve and Donna Teuscher

**TECHNOLOGY VOLUNTEER**  
Adam Jester



CATTARAUGUS REGION  
COMMUNITY FOUNDATION

Non-Profit Org.  
U.S. Postage Paid  
Randolph, NY  
14772  
Permit No. 31

GROWINGGOOD.

120 North Union Street  
Olean, NY 14760  
Address Service Requested

